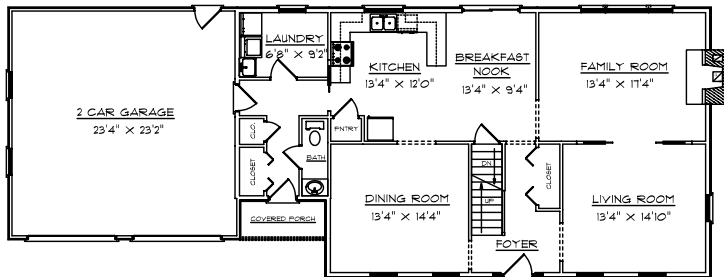


Ashford Colonial

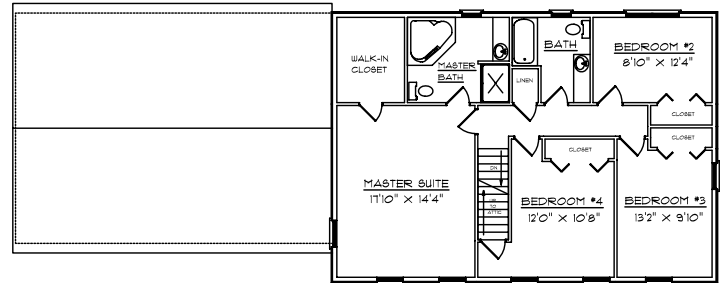
Description:

- 28'0" x 40'0"
- 2420 sqft & 2 car garage
- 4 Bedrooms, 2 1/2 baths
- Covered Porch
- Master Suite w/whirlpool tub & oversized walk-in closet

Photograph may differ from floor plan



FIRST FLOOR



SECOND FLOOR

Cost:

Advertised Erected Shell:	\$ 76,955.00*
Sub-Contracting Estimates:	\$ 108,390.00**
Excavation/Septic/Sewer/Well/Water:	\$ <u>Variables not known</u> +
Total Cost:	\$ 185,345.00 ++

Cost Per Square Foot (House/Garage): \$ 76.60

* Includes blueprints, materials & labor.

** Items included in Sub-Contracting Estimate: Foundation, concrete floors, hatchway & stoop(s), fireplace/masonry, plumbing, heating, electrical (NEC), insulation, gutters & leaders, sheetrock, interior package (cabinets/vanities/trim/doors), interior package labor, finished stairs, finished floors, permits, lighting fixtures (interior & exterior).

+ Items **NOT** included in Estimate: Land, excavation, septic or sewer hook-up, well or water hook-up, surveying/engineering, foundation damp-proofing, basement & garage grading, painting/staining (interior & exterior), appliances, clean-up at job site, landscaping, driveway (gravel & apron), miscellaneous decorating.

++ Prices may vary with location & may change without notice due to economic variables.