



CUSTOM DESIGNED & QUALITY BUILT
HOMES • ADDITIONS

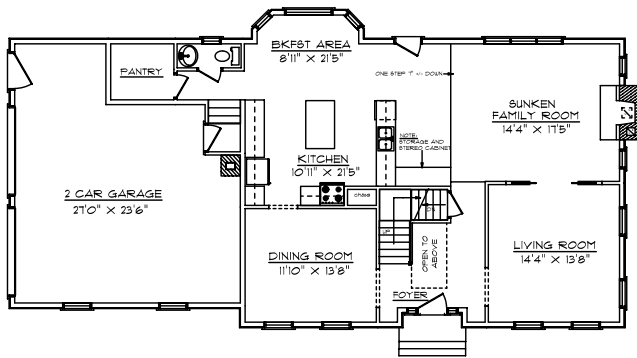
Tender Loving Care that puts YOU first!

Killingworth Colonial

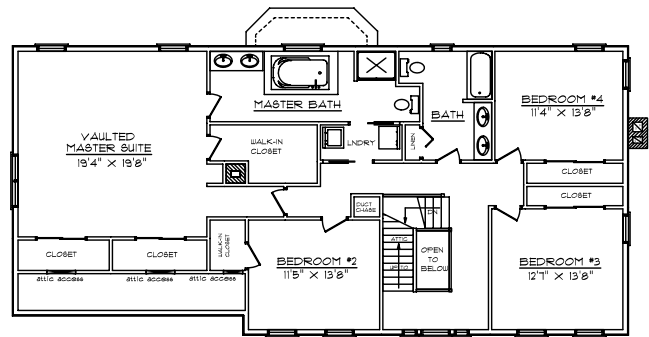
Description:

- 30'0" x 40'0"
- 3072 sqft & 2 car garage
- 4 Bedrooms, 2 1/2 baths
- Sunken Family Room
- Open Foyer
- Walk out angled bay in rear
- 2nd floor laundry
- Walk-up attic

Photograph may differ from floor plan



FIRST FLOOR



SECOND FLOOR

Cost:

Advertised Erected Shell:	\$ 110,590.00*
Sub-Contracting Estimates:	\$ 126,090.00**
Excavation/Septic/Sewer/Well/Water:	\$ <u>Variables not known</u>⁺
Total Cost:	\$ 236,680.00⁺⁺

Cost Per Square Foot (House/Garage): \$ 77.05

* Includes blueprints, materials & labor.

** Items included in Sub-Contracting Estimate: Foundation, concrete floors, hatchway & stoop(s), fireplace/masonry, plumbing, heating, electrical (NEC), insulation, gutters & leaders, sheetrock, interior package (cabinets/vanities/trim/doors), interior package labor, finished stairs, finished floors, permits, lighting fixtures (interior & exterior).

+ Items **NOT** included in Estimate: Land, excavation, septic or sewer hook-up, well or water hook-up, surveying/engineering, foundation damp-proofing, basement & garage grading, painting/staining (interior & exterior), appliances, clean-up at job site, landscaping, driveway (gravel & apron), miscellaneous decorating.

++ Prices may vary with location & may change without notice due to economic variables.

Copyright © TLC Homes, Inc. 2009