

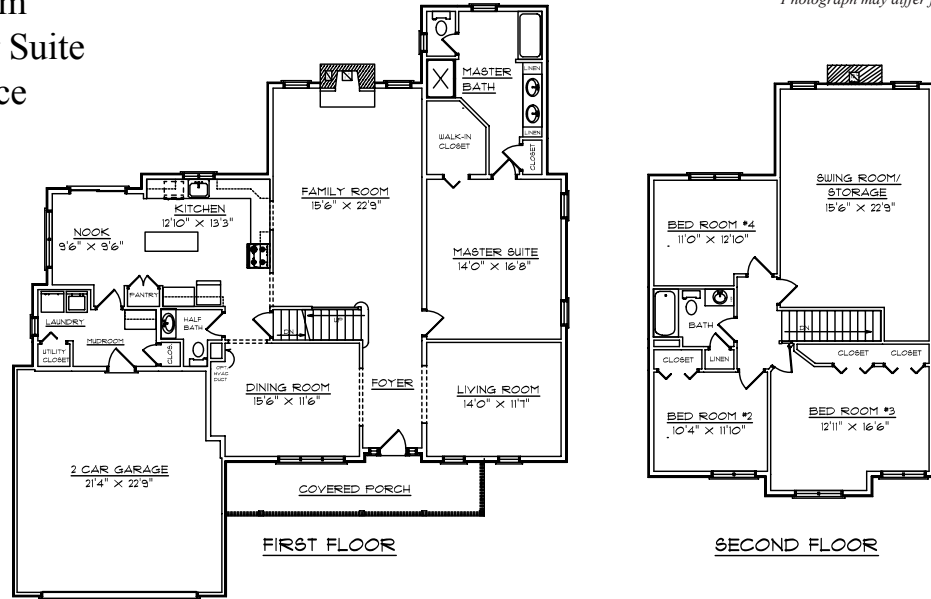


CUSTOM DESIGNED & QUALITY BUILT
HOMES • ADDITIONS
Tender Loving Care that puts YOU first!

Mystic Contemporary

Description:

- 47'6" x 52'0"
- 2937 sqft (incl. swing room/storage)
- 2 car garage
- 4 Bedrooms, 2 1/2 baths
- Large Family Room
- First Floor Master Suite
- Large storage space
- Covered Porch
- Mudroom



Cost:

| | |
|-------------------------------------|---------------------------------------|
| Advertised Erected Shell: | \$ 109,280.00* |
| Sub-Contracting Estimates: | \$ 128,725.00** |
| Excavation/Septic/Sewer/Well/Water: | \$ <u>Variables not known</u>+ |
| Total Cost: | \$ 238,005.00⁺⁺ |

Cost Per Square Foot (House/Garage): \$ 81.00

* Includes blueprints, materials & labor.

** Items included in Sub-Contracting Estimate: Foundation, concrete floors, hatchway & stoop(s), fireplace/masonry, plumbing, heating, electrical (NEC), insulation, gutters & leaders, sheetrock, interior package (cabinets/vanities/trim/doors), interior package labor, finished stairs, finished floors, permits, lighting fixtures (interior & exterior).

+ Items **NOT** included in Estimate: Land, excavation, septic or sewer hook-up, well or water hook-up, surveying/engineering, foundation damp-proofing, basement & garage grading, painting/staining (interior & exterior), appliances, clean-up at job site, landscaping, driveway (gravel & apron), miscellaneous decorating.

++ Prices may vary with location & may change without notice due to economic variables.

Copyright © TLC Homes, Inc. 2009